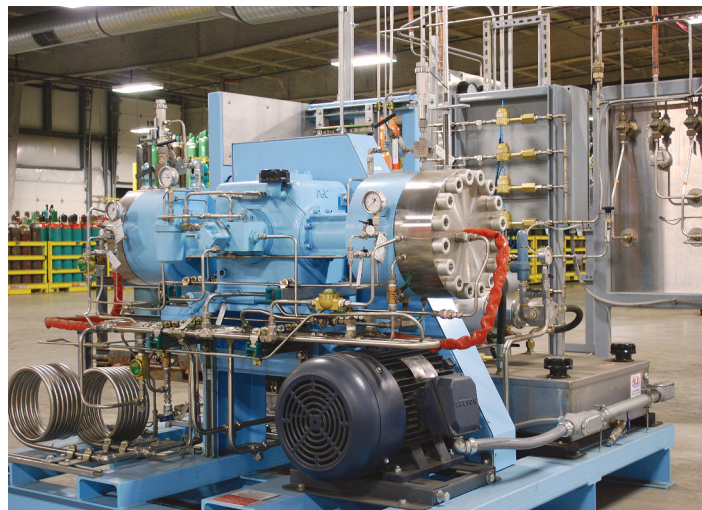


# Diaphragm Compressors

Pumping high purity industrial and specialty gases worldwide

## Transfill Applications

- Filling and offloading gases from tube trailers
- Filling gas cylinders and bulk storage tanks
- Gas blending, recycling & mixing
- Gases for welding, semiconductors, electronics and fiber optics manufacturing
- Pressure boosting and storage of gases from on-site gas generation systems
- Recovery of flash-off liquid from cryogenic tanks



## Experience compressing a wide spectrum of gases

PDC Machines has 45 years of experience engineering compressor systems to meet the flow rates and pressures required for pumping all types of gases.

Atmospheric Gases: N<sub>2</sub>, O<sub>2</sub>, Ar, CO<sub>2</sub>

Rare Gases: He, Ne, Kr, Xe

Medical: O<sub>2</sub>, N<sub>2</sub>O, NO

And many other gases used in Chemical, Electronic, Fuel, R&D including H<sub>2</sub>, HCl, HBr, NF<sub>3</sub>, SF<sub>6</sub>, Cl<sub>2</sub>, SiH<sub>4</sub>

Industry Leaders rely on PDC Machines for their high-purity transfill needs.



# Benefits

## High Product Purity and Environmentally Friendly Compression

- **High Product Purity** Diaphragms isolate hydraulic oil from process gas
- **Zero Gas Emissions** Compressed gases cannot leak into the atmosphere
- **Safer Operation** Fast acting leak detection system automatically shuts down the compressor in the event of an oil or gas leak

## High Reliability & Uptime with Low Maintenance and Worry-free Operation

- Customers are experiencing up-to 10,000 hours of continuous operation without the need for spare parts replacement

## Horizontally-Opposed Designs for High-Efficiency Operation and Low Energy Costs

- Duplex and two-stage stage designs are available to accommodate a wide range of pressures and flows in one or two stages instead of three or four
- Handles high inlet pressures without the need for regulators, lowering energy costs
- Simplex units are field-convertible to duplex units to increase the flow
- Duplex units provide twice the flow and 1/3 horse-power consumption

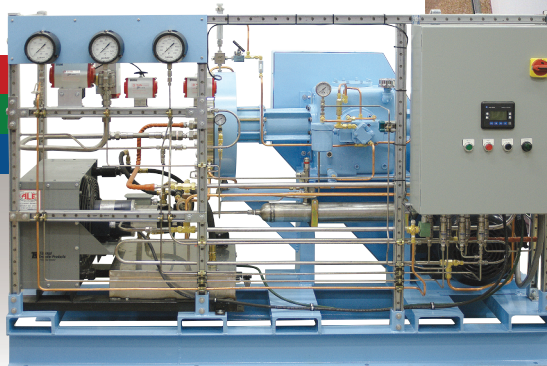
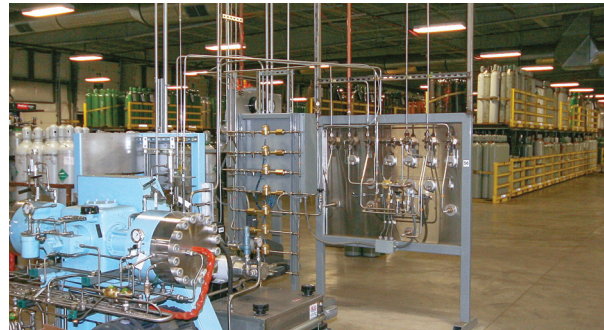
## Responsive After-Sales Service

- PDC offers industry leading field service support with the most prompt delivery of spare-parts for PDC within 24-48 hours in emergency cases
- Hundreds of OEM and custom parts in stock with most shipping within 24 hours

## Codes and Standards

PDC systems are designed using the country specific electrical, mechanical, and safety standards wherever they are installed in the world. These include: ASME, NEC, NFPA, UL, CSA, CE (ATEX/PED), and others

With thousands of installations worldwide PDC has earned a reputation for delivering the best in value, quality, performance and reliability.



30 Fretz Road  
Souderton, PA 18964  
USA

+1-215-443-9442  
info@pdcmachines.com  
www.pdcmachines.com